



# PROJECT SHEET CESBA MED :

For Sustainable MED Cities



Projet cofinancé par le Fonds européen de développement régional



## PROJECT OVERVIEW

The CESBA MED project identified indicators and assessing methods for the sustainability of buildings and neighbourhoods from 14 existing European projects. Each European partner developed its own evaluation tool, including these indicators and other contextualized tools.

In Auvergne-Rhône-Alpes, this tool was tested on the ZAC du Bon Lait neighbourhood in Lyon. A complementary sociological study was conducted in order to relate the inhabitants' perception of this district to the results obtained through the evaluation tool.



## GOALS IN THE AUVERGNE-RHÔNE-ALPES REGION

- ∞ Analyse the current situation and propose a solution to harmonise the built assessment systems in Europe.
- ∞ Develop tools to find the most affordable and operational solutions that are possible for developing large-scale energy efficiency programmes.
- ∞ Promote the adoption of these assessment tools by public administrations.



## TARGETS

Large local authorities and urban planners in charge of renovating and creating sustainable neighbourhoods



## INVOLVED ACTORS IN THE REGION

- ∞ Large local authorities
- ∞ Planners
- ∞ Regional players of the building sector
- ∞ Energy and urban planning agencies
- ∞ Academics and sociology research offices
- ∞ Auvergne-Rhône-Alpes Énergie Environnement (AURA-EE)

## TOTAL BUDGET



€3,2 M

allocated to the different partners

## DURATION



November 2016 – October 2019

## EUROPEAN PARTNERS

10 partners from 7 countries of the Mediterranean area: Austria, Croatia, Spain, France, Greece, Italy, and Malta (representing public actors, regional bodies and research centres).

# ACTIVITIES CARRIED OUT



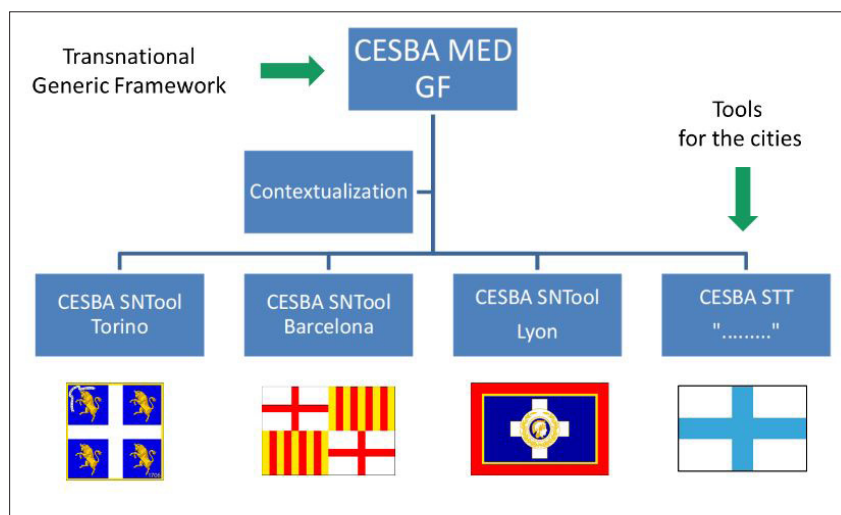
## ▶ Development of a methodology, tools and decision-making process

CESBA MED gathered information from 14 European projects and public systems for assessing the sustainability of the built environment. This information was analysed in order to elaborate a common list of CESBA MED indicators at the scale of buildings and neighbourhoods, for the Mediterranean region.

On this basis, CESBA MED has developed a method for assessing the sustainability of the built environment and a series of tools helping decision-makers and property managers to implement more sustainable and energy-efficient renovation plans, combining buildings and urban scale.

The tools are free and open source, consisting of a general international framework and indicators that can be contextualised according to local priorities. By using the CESBA MED assessment system, cities can adapt the tools to their specific needs.

### Process of adaptation of the CESBA MED Assessment System to local conditions

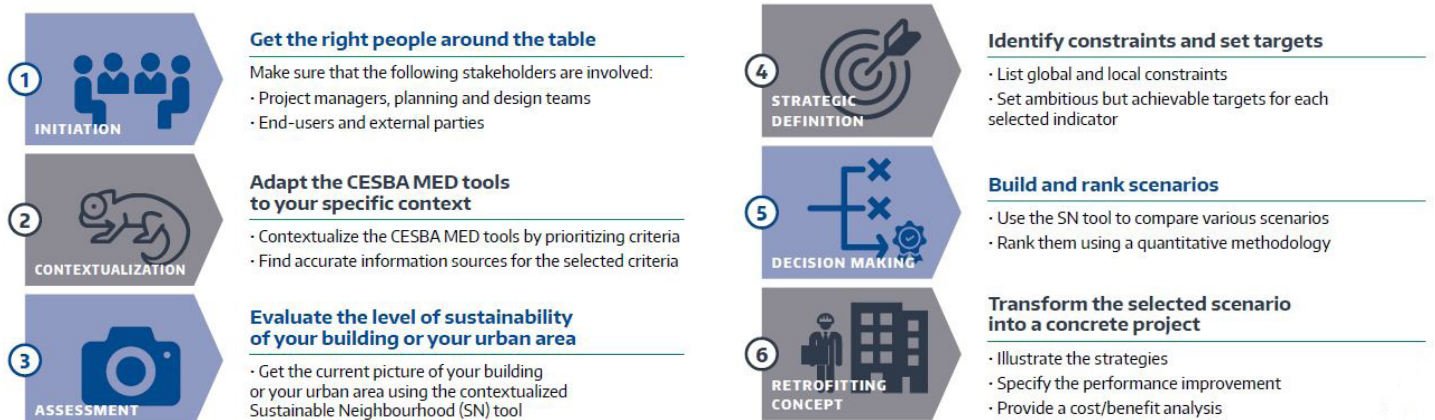


### The CESBA MED decision-making process

In addition, CESBA MED designed a decision-making process model in order to help public authorities to define the best scenarios for sustainable renovation at neighbourhood and building level. This process is composed of 6 steps.

### Model for decision making process in 6 key stages

The following process is relevant for both building and urban scales



## ► The tools, tested on concrete cases

The objective was to test the building quality assessment tool in each of the 9 European regions involved in the project, in order to check if it was adapted to the local context.

In the Auvergne-Rhône-Alpes Region, AURA-EE worked with SERL (a developer in the Lyon area), the Métropole de Lyon (leader of a reference system for sustainable neighbourhoods) and the Local Energy and Climate Agency (ALEC). The ZAC du Bon Lait, in Lyon Gerland, a district built with sustainable objectives, was selected. It was designed and built according to the sustainable neighbourhood standard of the Métropole de Lyon. The test was conducted in two stages and most of the dwellings were delivered in 2013.

### ***Building quality assessment***

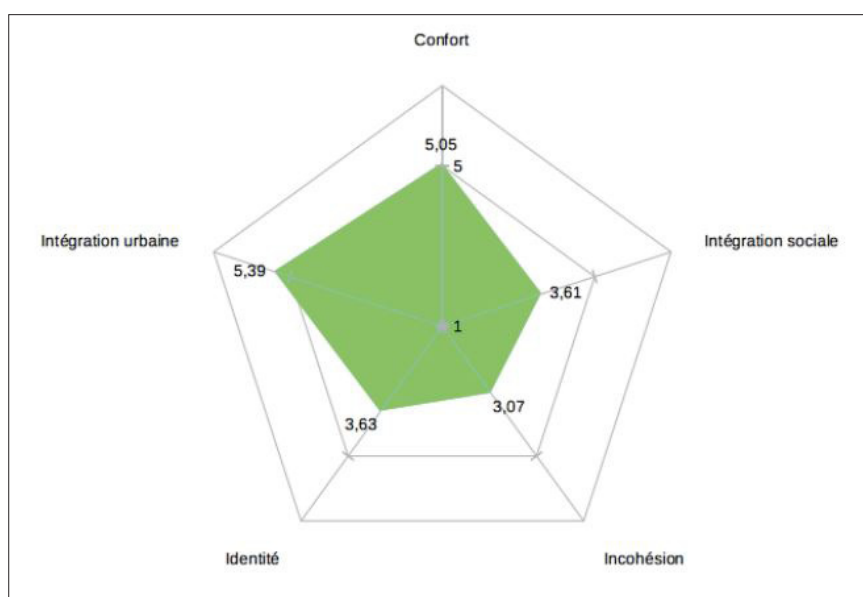
The first phase confirmed that the quantification tool created at the European level can be adapted to the local context in Lyon, using the prioritization of indicators, which helps to highlight local issues. To carry out this first test phase, AURA-EE requested the support of ALEC of Grand Lyon to work on the quantification of the building quality (for two buildings and on the district scale).

Therefore, the limits of using a single tool on a European scale were highlighted, since among the 16 key performance indicators selected by CESBAMED for the building evaluation, two could not be calculated because the data was not available in France. Nevertheless, this European dynamic opens up future prospects, as these two indicators (the quantity of recycled construction materials and the quantity of construction waste produced on the building site), should be more easily available in the coming years.

### ***Analysis of the inhabitants' perception of the ZAC du Bon Lait district***

For the second test phase, AURA-EE collaborated with the University Lyon 2 and the Scope(s) research bureau, expert in social psychology. The study had a twofold objective: on one hand, to understand the impacts of sustainable accommodations on the inhabitants' lives and on the other hand, to identify indicators to be used in future projects.

In order to obtain results that are rich in information, the survey used three methods: a questionnaire (93 respondents), 25 mental maps (on the inhabitants' personal representations of the neighbourhood) and about 10 detailed and commented itineraries. This work allowed to draw up the «urban climate» of the district, which quantifies the inhabitants' feelings along five axes (comfort, social integration, cohesion, identity and urban integration). Also, thanks to a standardized methodology, it is possible to compare these results with those of other emblematic districts in the Lyon area.



## ▶ The CESBA Neighbourhood Award

CESBA MED organised a European competition for sustainable neighbourhoods, CESBA Neighbourhood Award (CNA). The Award is a European section of the Global Urban Challenge 2020 of the Sustainable Built Environment series. It is an official recognition created to highlight the best practices of sustainable districts.

Among the three applications from the Auvergne-Rhône-Alpes Region, the Castellane project (Sathonay-Camp) is the winner of the "New developments" category. The other neighbourhoods, Sonod in Belley and ZAC Valmar in La Ravoire, were also particularly noteworthy. A project review was organised in June to publicly present these three remarkable projects.



## PROJECT RESOURCES AVAILABLE



### The CESBA MED passport for the ZAC du Bon Lait in Lyon

This document allows to compare the results obtained for this urban area in Lyon, taking into consideration modernization scenarios or the performance of Mediterranean areas.

<https://cutt.ly/ytrvrgo>

### Training materials for the adoption of tools and methods

Dedicated training materials have been created for technicians and decision-makers. Available in six languages, they are composed of technical documents helping to understand the tools and methodologies created, presentations to transmit this knowledge and an e-learning platform to store these elements.

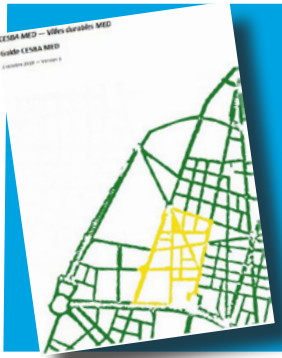
<https://cutt.ly/QtrlyxO>



### Perception analysis of the ZAC du Bon Lait neighbourhood by its inhabitants (in French)

This sociological study highlighted the complementarity between a quantitative social approach and the quality assessment of the built environment, as promoted in the CESBA MED project.

<https://cutt.ly/Ptrk4QC>



### The CESBA MED guide (in French)

This methodological guide proposes specific recommendations to facilitate the implementation of the CESBA MED project results in policies, plans and regulations, in order to improve the sustainability of the built environment.

<https://cutt.ly/ntrluzY>



### CESBA MED policy paper

This document is intended for elected officials and public authorities in charge of building policies. It highlights the main lessons of the CESBA MED project and identifies eight recommendations to promote a new culture of the built environment in Europe.

<https://cutt.ly/Strloqq>



## FUTURE PROSPECTS

The CESBA MED project defined the following 8 policy recommendations to stimulate the design of sustainable neighbourhoods:

1. Ensure the mainstreaming of sustainability in urban planning and management.
2. Promote the use of harmonised assessment tools to measure, monitor and compare the sustainability of the urban environment.
3. Make environmental data accessible to public administrations.
4. Seek alternative schemes to fund sustainable urban initiatives, especially at local level.
5. Promote the harmonisation of assessment systems, labels or certificates as instruments to reach greater sustainability standards of the built environment.
6. Integrate the economic and social dimensions in all urban project interventions.
7. Regularly involve citizens and stakeholders on sustainable urban development.
8. Organise regular training to better equip professionals and public officers in the field of sustainable urban development.

## TO FIND OUT MORE

- Project website: <https://cesba-med.interreg-med.eu/>
- CESBA MED presentation leaflet: <https://cutt.ly/ufymxAv>

## CONTACT IN AUVERGNE-RHÔNE-ALPES

Auvergne-Rhône-Alpes Énergie Environnement

**Etienne Vienot** – Project Manager

[etienne.vienot@auvergnerrhonealpes-ee.fr](mailto:etienne.vienot@auvergnerrhonealpes-ee.fr)

With the support of:



Project sheet made by AURA-EE

**Updated: July 2020**